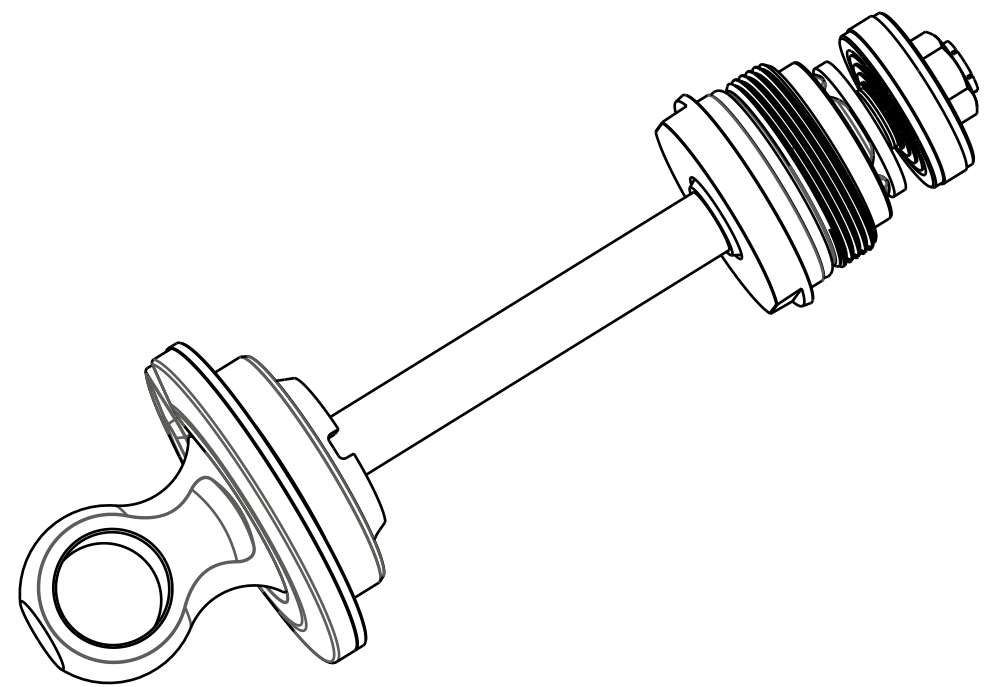


4

3

2

1



Fastener, Standard: Nut [1/4-28 X 5/32 TLG] Grade 8, Zinc Plated

812-06-080-KIT  
Bearing Assembly: DHX2, 9mm Shaft

018-00-012-A

TORQUE:  
80±3 IN LB

SEE TABLE

VALVE ASSY

234-04-646  
Spring Retainer: Insert, Twin Tube, Ø9mm Shaft

008-01-032  
Bumper: B/O [Ø 9mm Shaft, 0.400 TLG] Nitrile 60A

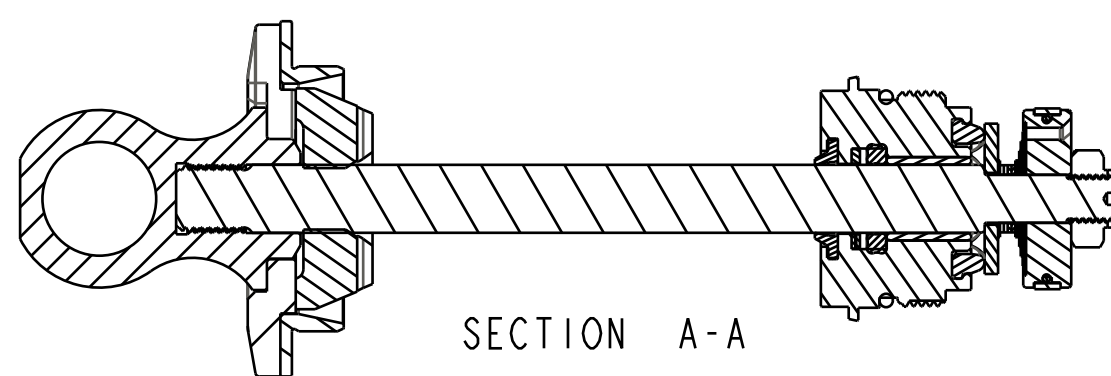
234-04-815  
Spring Retainer: Slotted [Ø1.350 Perch, 9mm Shaft] Al 6061, Black Ano III

LOCTITE:  
RED 277

213-01-460  
Eyelet: 9mm Shaft, DHX2, Al 7075, Black Ano III

TORQUE:  
80±3 IN LB

PART NO.	ASSEMBLY DESCRIPTION	SHAFT P/N	DESCRIPTION
808-17-191-KIT	Eyelet Assy: (T) Shaft, 9mm, [0.25 Piston], DHX2, 7.875 X 2.00	229-19-194	Shaft (T), 9mm, [0.25 Piston], DHX2, 7.875 X 2.25
808-17-192-KIT	Eyelet Assy: (T) Shaft, 9mm, [0.25 Piston], DHX2, 8.50 X 2.50	229-19-190	Shaft (T), 9mm, [0.25 Piston], DHX2, 8.50 X 2.50
808-17-193-KIT	Eyelet Assy: (T) Shaft, 9mm, [0.25 Piston], DHX2, 8.75 X 2.75	229-19-191	Shaft (T), 9mm, [0.25 Piston], DHX2, 8.75 X 2.75
808-17-194-KIT	Eyelet Assy: (T) Shaft, 9mm, [0.25 Piston], DHX2, 9.50 X 3.00	229-19-192	Shaft (T), 9mm, [0.25 Piston], DHX2, 9.50 X 3.00
808-17-195-KIT	Eyelet Assy: (T) Shaft, 9mm, [0.25 Piston], DHX2, 10.50 X 3.50	229-19-193	Shaft (T), 9mm, [0.25 Piston], DHX2, 10.50 X 3.50
808-17-196-KIT	Eyelet Assy: (T) Shaft, 9mm, [0.25 Piston], DHX2, 7.875 X 2.25	229-19-194	Shaft (T), 9mm, [0.25 Piston], DHX2, 7.875 X 2.25



SECTION A-A

PROPRIETARY -  
THIS DOCUMENT CONTAINS CONFIDENTIAL, PROPRIETARY INFORMATION  
THAT IS FOX PROPERTY. DO NOT DISCLOSE TO OR DUPLICATE  
FOR OTHERS EXCEPT AS AUTHORIZED BY FOX.

**FOX** Factory, Inc. Ph 831-768-1100  
130 Hangar Way, Watsonville, CA 95076 USA Fax 831-768-9312

TITLE  
**Eyelet Assy:  
Shaft, 9mm, DHX2**

SIZE DWG. NO.

**C**

PLOT SCALE | .00:1

SHEET 1 OF 1

4

3

2

ProE ASSEM